

# DM-S™

*Duct Mounted Saddle for Needlepoint Bipolar Ionization Systems*

## PRODUCT DESCRIPTION

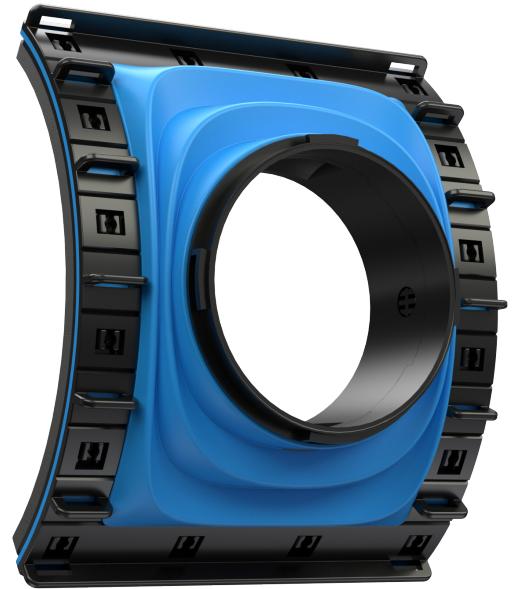
The DM-S is a single adaptable saddle solution for installing GPS Air's DM-2 air ionization system onto varying round duct diameters

## STANDARD FEATURES

Quick turn adapter connection for ionizer, adaptable skeleton can be set to multiple round surface duct profiles, multi-point fastener collar with foam gasket for sealing against duct, flexible membrane seals saddle body.

## INSTALLATION

- Designed for use on round ducts of 6" dia and up



## SPECIFICATIONS

Ionizers supported	DM-2	Duct types supported	Solid round duct, 6" Dia and up
Unit Dimensions	8.5" wide x 6.5" tall x 2" depth	Weight	0.5 lb.

